

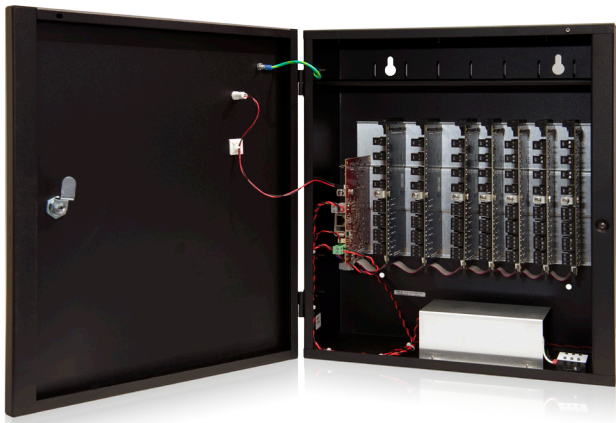


S2 Supervised Input Application Blade

Overview

S2 Supervised Input Application Blade is an interface board with eight input points to support a wide range of devices. The inputs support normally open, normally closed, supervised and non-supervised circuits. Compatible devices include buttons, door contacts, motion detectors, beam detectors, power supply monitoring points, burglar and alarm panel points and more.

Up to seven S2 Application Blades in any combination can be supported by an S2 Network Node. S2 Application Blades are easy to install – S2 Nodes automatically recognize and address them without jumpers or switches. Power and communications are delivered to every S2 Application Blade via a ribbon cable bus.



Up to seven S2 Application Blades in any combination can be supported by an S2 Network Node.

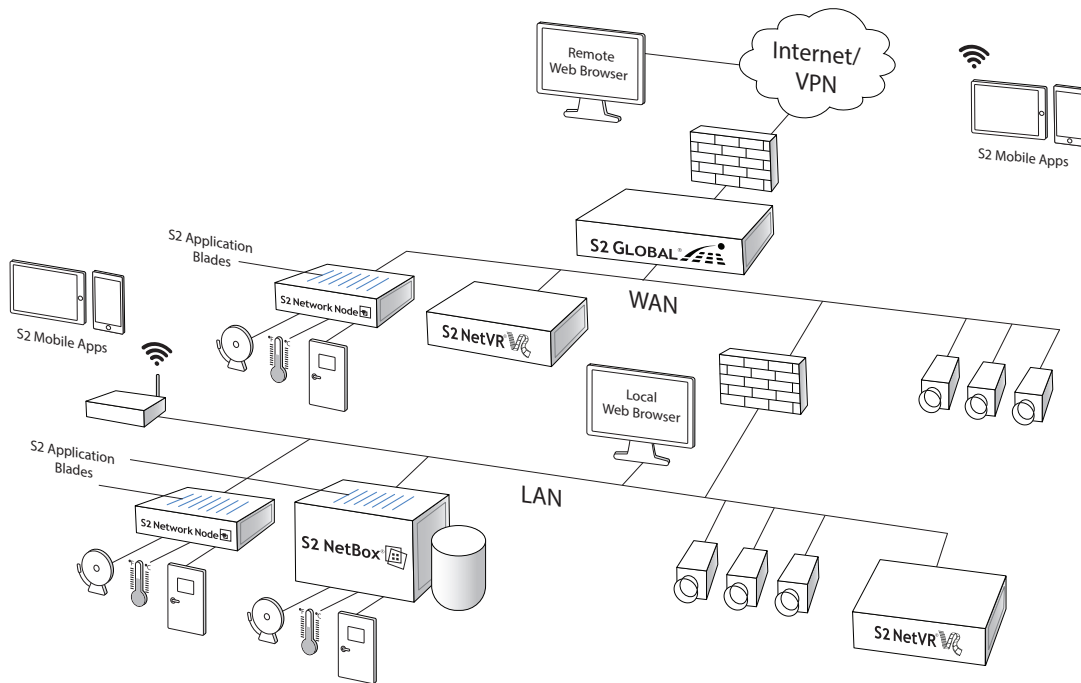
Key Features

Inputs

- **Device Support:** Supports buttons, door contacts, motion detectors, beam detectors, power supply monitoring points, burglar and alarm panel points and more
- **Input Configuration:** Includes eight inputs configurable to normally open, normally closed, supervised and non-supervised circuits

System

- **Automatic Discovery:** Automatically connects to an S2 Node without jumpers or switches
- **Hardware Compatibility:** Fits available blade slots in S2 NetBox®, S2 NetBox VR Quatro, S2 Network Node and S2 Network Node VR hardware



Schematic only. Not a network diagram.

Specifications – S2 Supervised Input Application Blade

Access Control

Supervised Inputs	8
Input Supervision	Quad State (Open / Short / Normal / Alarm) Resistors value = 1K
Selection per Input	Dual Resistor / Single Series Resistor / Single Parallel Resistor / Unsupervised
Input Circuit Types	C / NO / NC

General

Dimensions (H, W, D)	7.5 in x 4.0 in x 0.83 in (191 mm x 102 mm x 21.1 mm)
Weight	4.5 oz (127 g)
Operating Temperature	32°F – 95°F (0°C – 35°C)
Storage Temperature	-4° – 158°F (-20° – 70°C)
Operating Environment	Humidity 85%, non-condensing 35° C
BTU Maximum	20 per hour
Regulatory Approvals	UL, CE, RoHS
Warranty	2 years, hardware

Cabling Requirements

Supervised Input Cable	Twisted, shielded 22 AWG Belden #9462
Max Supervised Input Cable Distance	2000 ft (610 m)

Part Numbers

S2-INP	Supervised input application extension blade with 8 inputs
---------------	--

For more information, please visit www.s2sys.com.